

Optimal Care = ↑ Access + ↓ Costs + ↑ Outcomes

Healthcare administrators are enablers, allowing clinical caregivers to do the best job possible. Many of the problems facing healthcare providers today, including patient safety, accessibility, and rising costs, can be addressed through improved healthcare resource planning. These are critical issues that are growing in visibility and complexity.

Optimal Care Software helps Healthcare administrators improve clinical outcomes, increase staff satisfaction and decrease operating costs.

Resource Planning for Healthcare

In the last decade, Enterprise Resource Planning (ERP) software has positively impacted many industries. Much of the faster delivery, decreased costs, and higher quality in the products and services we enjoy today are attributable to ERP technology.

ERP technology can provide similar benefits to Healthcare. When clinical caregivers have the right resources at the right time in the right quantities, patient outcomes are improved, patient throughput increases, patient access increases, patient wait times decrease, patient satisfaction increases, staff satisfaction increases, liability costs decrease, and operating costs decrease.

Optimal Care Software provides Healthcare resource planning tools in the critical enterprise areas of clinical staffing, medical equipment / fixed-assets, and medications / clinical supplies.

Clinical Staffing

An accurate picture of upcoming demand enables better scheduling of the skills needed, achieving better schedule coverage. Better schedule coverage means less stress on personnel from understaffing, and a better match of skills to the workload at hand, improving staff satisfaction and patient outcomes.

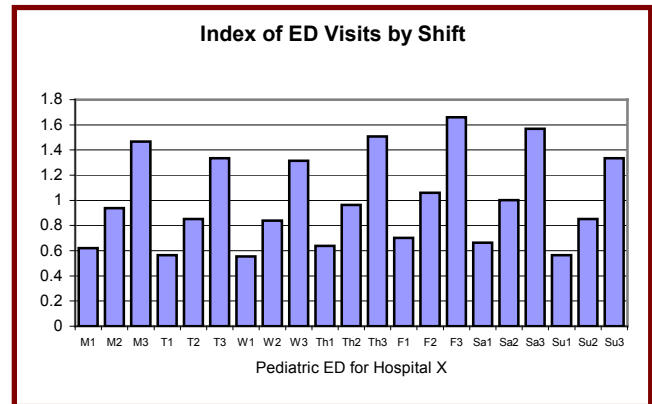


Figure 1: Workload in a Pediatric ED, by shift.

Shifting underutilized staff into understaffed areas, and identifying opportunities to increase levels of semi-skilled workers instead of skilled workers reduce staffing costs. The result is an optimized deployment of the clinical staff.

Medications / Clinical Supplies

Optimized replenishment planning calculates when and how much to order, to minimize costs while achieving defined availability targets.

Through historical demand and supply analysis, Optimal Care accurately aligns upcoming demand with the lowest-cost procurement of supplies.

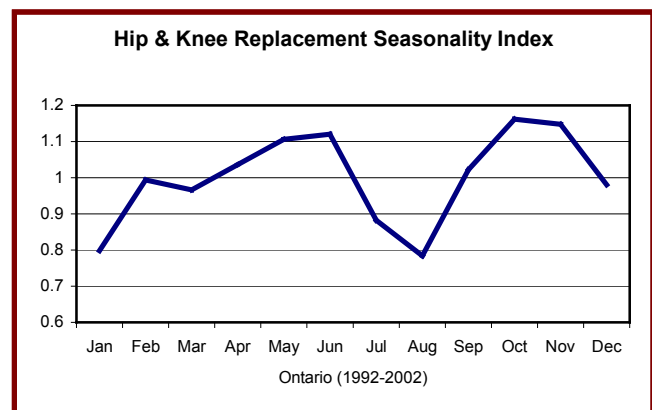


Figure 2: Notice the large seasonal variations in Hip & Knee Replacements from June to August to October.



Optimal Care = ↑Access + ↓Costs + ↑Outcomes

Reliably having all needed resources removes delays and disruptions to patient care, allowing caregivers to provide the best possible care. Outcomes improve and liability costs decrease.

“It is amazing how the lights went on when we determined that by eliminating stock-outs, we actually reduced the burdens and distractions nurses have in taking care of patients. That is what Mercy is all about. We are not in the supply chain business; we are in the healthcare business.”

Vance Moore
President of Mercy ROi

Medical Equipment / Fixed-Assets

Improve the utilization of key equipment and facilities. Knowledge of upcoming demand enables the shifting of planned usage (maintenance and scheduled procedures) away from peak times, and improved scheduling of related staff and supplies.

Increased availability and better load leveling reduces contention, decreasing patient wait times and increasing throughput and patient satisfaction.

Operating costs are reduced in several ways: load leveling reduces equipment stress and maintenance costs; improved staff scheduling reduces overtime costs; optimized replenishment of related supplies reduces purchasing costs.

Capital outlays are reduced, since increased availability reduces the need for additional equipment and reduced stress lengthens the equipment’s life expectancy. The result is optimized utilization of equipment and facilities.

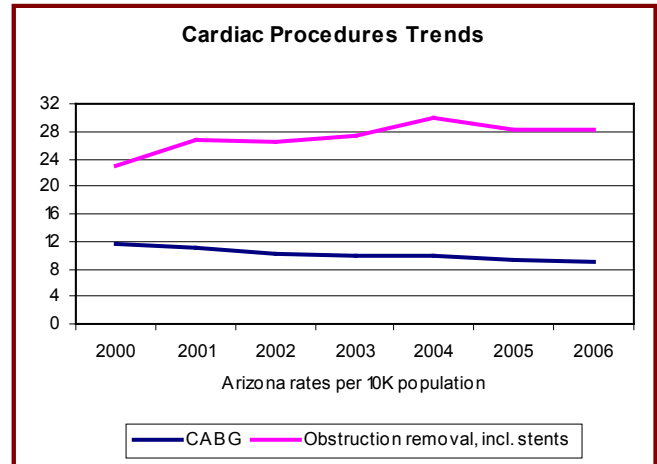


Figure 3: Changing trends in Cardiology: less bypass operations and more stents.

The Optimal Care Software Solution

Optimal Care Software uses advanced resource demand forecasting & replenishment optimization algorithms, commonly used by ERP tools in other industries. Combined with the deep experience of Optimal Care Software’s professional services group, the result is a powerful new approach to optimizing the delivery of Healthcare.

Optimal Care Software provides a complete solution of professional services, software tools for ongoing self-directed resources management, and training on the effective use of those tools. The significant cost savings ensure that the payback for system setup costs is quickly realized, and the ongoing return on investment is exceptional.

All Optimal Care Software products and services are offered with no-risk, satisfaction guaranteed conditions. Call us today for more information on how to optimize your Healthcare delivery.



Optimal Care Software

Effective Healthcare Resource Planning

1 (847) 409-9039

Sales@Optimal-Care.com

www.Optimal-Care.com

