

Resource Planning Solutions for Clinical Staffing

A large body of research demonstrates the reality of the current and ongoing Healthcare staffing crisis. It is also well documented that adequate levels of staffing directly impact the quality of patient care and staff retention & recruitment.

Optimally deploying the staff you already have would provide clear and dramatic benefits, but how do you know what your needs will be next month, or next week, or even tomorrow?

Optimal Care Software takes the guesswork out of resource planning by providing a clear and accurate picture of upcoming demand. This includes:

- Upcoming patient volume by department, acuity and case mix
- The resources (supplies, equipment & staff) needed for the upcoming patient volume
- Expected variability in the demand forecast and the costs versus benefits of covering that variability

Optimal Care Software gives Healthcare administrators the insight and control to optimize the availability of resources while balancing the need to contain costs.

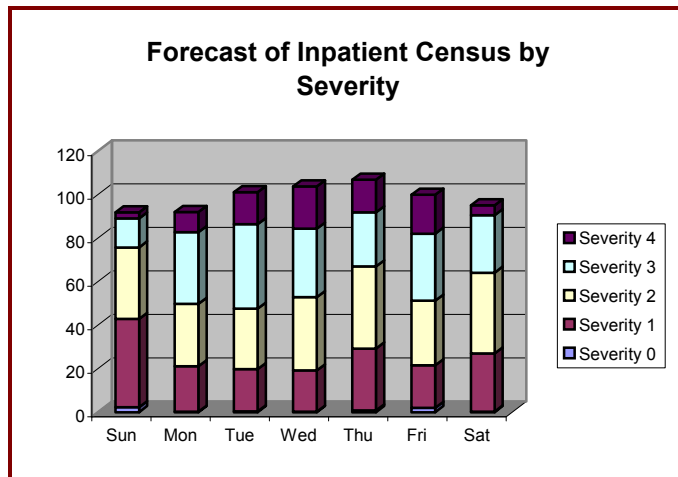


Figure 1: A 7-day forecast for an east coast hospital's Inpatient census by severity level.

Better Schedule Coverage

You need to schedule weeks in advance. You know how many staff you need per patient, but how many patients will you have next Tuesday? Being caught short-handed forces you to scramble for coverage, annoys your staff, drives up your costs, and reduces the quality of your patient care. Over-scheduling benefits no one and is a waste of dollars. With Optimal Care Software, you can improve coverage without increasing your costs. We provide the foreknowledge and control you need to take the guesswork out of staff scheduling.

With Optimal Care Software, you can also see upcoming volumes by case mix and patient acuity. This allows you to match staff skills to the work on hand, which again increases the quality of patient care and staff satisfaction while controlling costs.

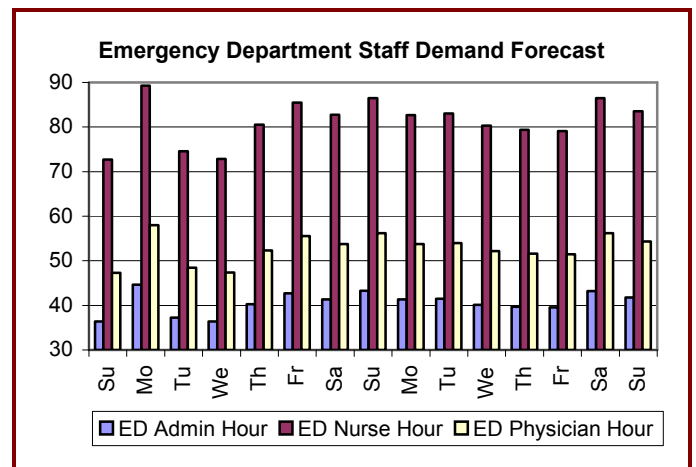


Figure 2: A sample 15-day forecast of Emergency Department staffing needs based on expected visits by case mix and patient acuity.

Improved Staff Satisfaction and Patient Care

Research has shown that work satisfaction is an important indicator of staff retention, and frequency of short staffing is a consistent predictor of job dissatisfaction. In other words, improved staff coverage increases staff retention.



Clinical Staff Planning Solutions

Research also indicates a clear link between adequate staff coverage and the quality of patient care. Some states have even mandated minimum staff to patient ratios in an effort to ensure adequate patient care. This has placed a significant additional burden on healthcare providers already struggling to maintain sufficient clinical staffing levels.

With Optimal Care Software, adequate staffing levels can be maintained more consistently without overstaffing, dramatically reducing the occurrence of short staffing. This improves staff satisfaction and patient care quality by optimally scheduling the clinical staff already on hand.

Also important to staff satisfaction and patient care quality is the availability of adequate support staff. With Optimal Care Software, you will be able to better match the skill levels of scheduled staff to the upcoming workload.

Control Costs

Optimal Care Software clearly quantifies your demand patterns, so you know exactly what has occurred, and what will occur. Replace “I think I need...” with “I will need...”, and you will have the control needed to improve your healthcare delivery while still meeting your budget obligations.

Optimized staff scheduling also reduces costs in several key ways, including reduced overtime expenditures through improved staff coverage, increased staff retention which reduces recruiting and training costs, and better matching staff skill levels to the work on hand. Typically, you can decrease your costs by at least 5 percent while still maintaining patient care quality.

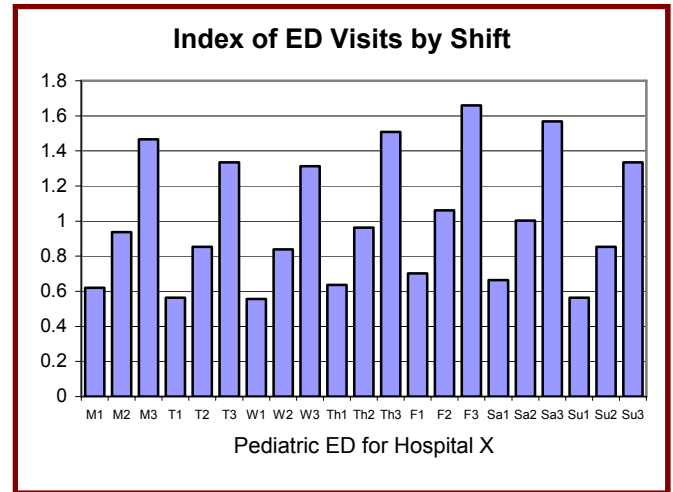


Figure 3: Workload Variability Index (1.0 is average) in a Pediatric Emergency Department, by shift.

The Optimal Care Software Solution

Optimal Care Software uses advanced resource demand forecasting & replenishment optimization algorithms. Combined with the deep experience of Optimal Care Software’s professional services group, the result is a powerful new approach to optimizing the delivery of Healthcare.

Optimal Care Software provides a complete solution of professional services, software tools for ongoing self-directed resources management, and training on the effective use of those tools. The significant cost savings ensure that the payback for system setup costs is quickly realized, and the ongoing return on investment is exceptional.

All Optimal Care Software products and services are offered with no-risk, satisfaction guaranteed conditions. Call us today for more information on how Optimal Care Software can help you optimize your Healthcare delivery.



Optimal Care Software

Effective Healthcare Resource Planning

1 (847) 409-9039

Sales@Optimal-Care.com

www.Optimal-Care.com

